

# LED Intelligent Driver

- Wireless dimming: RF 2.4GHz
- T-PWM™ digital dimming, present a perfect visual experience.
- Dimming range: 0-100%, LED start at 0.01% possible.
- Flicker-free (IEEE 1789), achieve the level of exemption assessment.
- Innovative thermal management technology, intelligent power life protection.
- Over-heat / Over voltage / Over load / Short circuit protection, recover automatically.
- Class 2 power supply. Full protective plastic housing.
- Compliant with Safety Extra Low Voltage standard.
- Suitable for internal lights application for I /II/III.



## T-PWM

Super depth dimming technology

## Flicker-free

IEEE 1789

Dimmable:  
0.01-100%



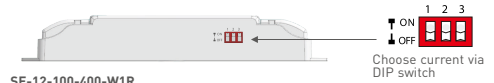
## Specification

Model	SE-12-100-400-W1R	SE-12-350-700-W1R	
OUTPUT	Output Voltage	10-42Vdc	10-24Vdc
	Max Output Voltage	50Vdc	35Vdc
	Output Current	100-400mA	350-700mA
	Output Power Range	1W-12W	3.5W-12W
	Strobe Level	High frequency exemption assessment level.	
	Dimming Range	0-100%, LED start at 0.01% possible.	
	LF current ripple(<120Hz)	<2%	
	Current Accuracy	±5%	
	Ripple & Noise	≤2V	
	PWM Dimming Frequency	≤3600Hz	
INPUT	Wireless Frequency	2.4GHz	
	Input Voltage	100-240Vac	
	Frequency	50/60Hz	
	Input Current	0.25A@115Vac, 0.15A@230Vac	
	Power Factor	PF>0.97/115Vac, PF>0.85/230Vac, at full load	
	THD	≤16% at 115Vac, ≤28% at 230Vac, at full load	≤16% at 115Vac, ≤25% at 230Vac, at full load
	Efficiency	>80%	>78%
	Inrush Current(typ.)	Cold start 5A at 230Vac	
	Anti Surge	L-N: 1kV	
	Leakage Current	<0.5mA/230Vac	
ENVIRONMENT	Working Temperature	ta: -30°C - 50°C tc: 75°C	
	Working Humidity	20 - 95%RH, non-condensing	
	Storage Temp., Humidity	-40°C - 80°C, 10-95%RH	
	Temp. Coefficient	±0.03%/°C (0-50°C)	
Vibration	10-500Hz, 2G 12min./1cycle, period for 72min. each along X, Y, Z axes.		
PROTECTION	Over-heat Protection	Intelligently adjusting or turning off the output current if the PCB temperature ≥110°C, auto recovers.	
	Over Load Protection	Shut down the output when current load ≥102%, auto recovers.	
	Short Circuit Protection	Shut down automatically if short circuit occurs, auto recovers.	
SAFETY & EMC	Withstand Voltage	I/P-O/P: 3750Vac	
	Isolation Resistance	I/P-O/P: 100MΩ/500VDC/25°C/70%RH	
	Safety Standards	IEC/EN61347-1, IEC/EN61347-2-13	
	EMC Emission	EN55015, EN61000-3-2 Class C, IEC61000-3-3	
	EMC Immunity	EN61000-4-2,3,4,5,6,8,11 EN61547	
Strobe Test Standard	IEEE 1789		
OTHERS	Dimension	135x30x20mm(LxWxH)	
	Packing	140x34x23mm(LxWxH)	
	Weight[G.W.]	80g±10g	



## LED current selection

DIP switch for multi optional currents' quick selection (see the table below).

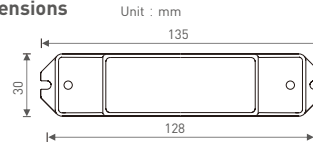


DIP Switch	1 1 1	1 1 1	1 1 1	1 1 1	1 1 1	1 1 1	1 1 1	1 1 1	1 1 1
Output Current	100mA	150mA	200mA	250mA	300mA	350mA	400mA		ON
Output Voltage	10-42V	10-42V	10-42V	10-42V	10-40V	10-34V	10-30V		OFF
Output Power	1-4.2W	1.5-6.3W	2-8.4W	2.5-10.5W	3-12W	3.5-12W	4-12W		OFF

DIP Switch	1 1 1	1 1 1	1 1 1	1 1 1	1 1 1	1 1 1	1 1 1	1 1 1	1 1 1
Output Current	350mA	400mA	450mA	500mA	550mA	600mA	650mA	700mA	ON
Output Voltage	10-24V	10-24V	10-24V	10-24V	10-22V	10-20V	10-18.5V	10-17V	OFF
Output Power	3.5-8.4W	4-9.6W	4.5-10.8W	5-12W	5.5-12.1W	6-12W	6.5-12W	7-12W	OFF

\* Please choose the current value when the driver is power off.

## Dimensions

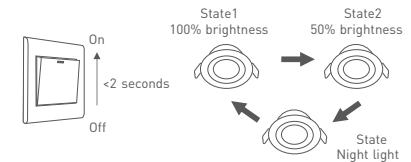


## Wiring diagram

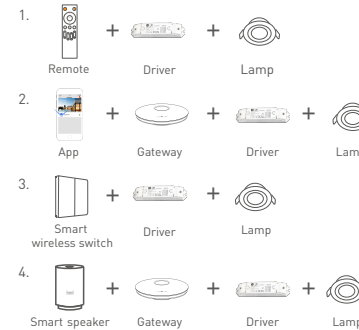


## Wall switch operation method

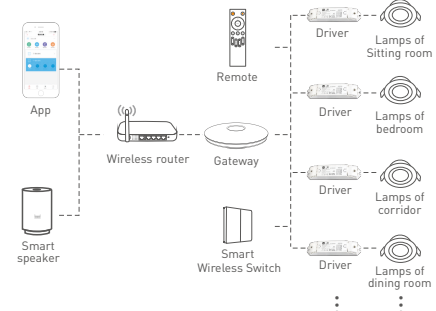
3 lighting states can be switched via wall switch On/Off.



## Multi control method



## System wiring



## Other operating methods

When the driver works with remote control, gateway, intelligent wireless switch etc., please refer to the manual of the corresponding product for usage.

\* No further notice if any changes in the manual. Product function depends on the goods. Please feel free to contact your supplier if any question.



# LED 智能调光驱动器

- 无线调光：RF 2.4GHz
- T-PWM™数字调光技术，呈现完美的视觉感受
- 调光范围：0~100%，LED从0.01%开始调光
- 无频闪（IEEE 1789），达到豁免考核级别
- 创新的热管理技术，智能保护电源寿命
- 过温、过压、过载、短路保护，可自动恢复
- Class 2电源，全防护塑胶外壳
- 符合SELV安全特低电压标准
- 适合室内 I、II、III类灯具应用

**T-PWM™**  
超深度调光技术

**无频闪**  
IEEE 1789

**Dimmable:**  
0.01-100%

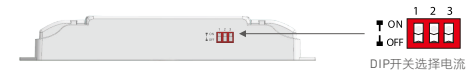


## 技术参数

型号	SE-12-100-400-W1R	SE-12-350-700-W1R	
输出	工作电压	10-42Vdc	10-24Vdc
	最大输出电压	50Vdc	35Vdc
	工作电流范围	100-400mA	350-700mA
	负载功率范围	1W-12W	3.5W-12W
	频闪级别	高频豁免考核级别	
	调光范围	0-100%，LED从0.01%开始调光	
	低频电流纹波 (<120Hz)	<2%	
	电流精度	±5%	
	纹波与噪声	≤2V	
	PWM频率	≤3600Hz	
输入	无线频率	2.4GHz	
	输入电压	100-240Vac	
	频率范围	50/60Hz	
	输入电流	115Vac≤0.25A, 230Vac≤0.15A	
	功率因数	PF>0.97/115Vac, PF>0.85/230Vac [满载]	
	谐波THD	115Vac@THD≤16%, 230Vac@THD≤28% [满载]	
	效率 [Typ]	80%	78%
	浪涌电流	冷启动5A@230Vac	
环境	抗浪涌	L-N: 1kV	
	漏电流	<0.5mA/230Vac	
	工作温度	ta: -30 ~ 50°C tc: 75°C	
	工作湿度	20 ~ 95%RH, 无冷凝	
保护	储存温度 湿度	-40 ~ 80°C, 10-95%RH	
	温度系数	±0.03%/°C [0-50°C]	
	耐振动	10-500Hz, 2G 12分钟/周期, X,Y,Z轴各72分钟。	
安规和电磁规格	过温保护	根据PCB温度超标情况[≥110°C], 智能调节电流输出或关闭, 可自动恢复。	
	过载保护	负载电流≥102%, 关闭输出, 可自动恢复	
其他	短路保护	输出线路短路自动关闭, 可自动恢复	
	耐压	输入对输出: 3750Vac	
	绝缘阻抗	输入对输出: 100MΩ/500VDC/25°C/70%RH	
	安全规范	IEC/EN61347-1, IEC/EN61347-2-13	
	电磁兼容发射	EN55015, EN61000-3-2 Class C, IEC61000-3-3	
	电磁兼容抗扰度	EN61000-4-2,3,4,5,6,8,11, EN61547	
频闪测试标准	IEEE 1789		
产品尺寸	135x30x20mm(LxWxH)		
包装尺寸	140x34x23mm(LxWxH)		
产品重量	80g±10g		

## LED电流选择

DIP开关快速选择多档电流值(具体方法见表格)

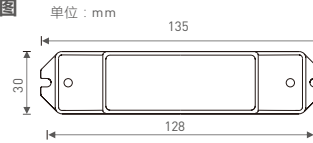


DIP开关	1	2	3	4	5	6	7	8	9
电流输出	100mA	150mA	200mA	250mA	300mA	350mA	400mA	ON	
电压输出	10-42V	10-42V	10-42V	10-42V	10-40V	10-34V	10-30V		
功率输出	1-4.2W	1.5-6.3W	2-8.4W	2.5-10.5W	3-12W	3.5-12W	4-12W	OFF	

DIP开关	1	2	3	4	5	6	7	8	9
电流输出	350mA	400mA	450mA	500mA	550mA	600mA	650mA	700mA	ON
电压输出	10-24V	10-24V	10-24V	10-24V	10-22V	10-20V	10-18.5V	10-17V	
功率输出	3.5-8.4W	4-9.6W	4.5-10.8W	5-12W	5.5-12.1W	6-12W	6.5-12W	7-12W	OFF

\* 请在断电状态下设置电流值。

## 尺寸图



## 连线图

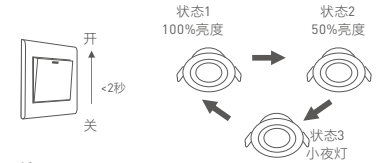


## 多种控制方式

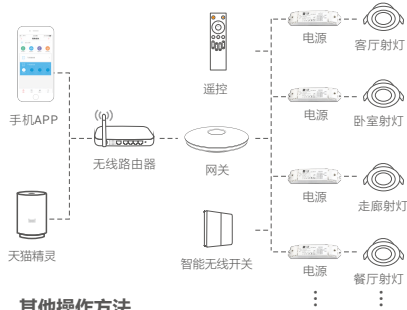


## 墙壁开关操作方法

通过墙壁开关通断灯具电源可实现3种灯光状态切换



## 系统图



## 其他操作方法

当本产品与遥控、网关、智能无线开关.....等配套使用时, 请参看相应产品的使用说明书并进行配对使用。

## 广东小雷科技有限公司

地址：珠海市南屏科技园屏东六路3号15栋  
电话：400 801 0925 官网：www.xiaolei.cn  
邮箱：info@xiaolei.cn